

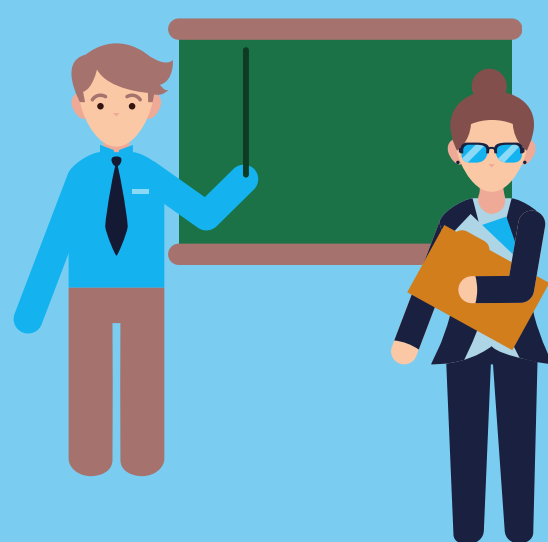
IBEST CO-TEACHING

AT METROPOLITAN COMMUNITY COLLEGE

HOW IT WORKS

The content instructor teaches course objectives.

The IBEST instructor delivers information processing strategies for the context and delivery of course content.



GOALS OF THE CO-TEACHING MODEL



- Offer equitable learning experiences for all students
- Increase student success and completion by providing contextualized support
- Reduce student costs and graduation timeline by reducing developmental coursework

OUTCOMES

- More students complete the course with a C or better when IBEST is implemented.
- In IBEST courses, more than 15 percent of students pass with a C or better compared to the same course without an IBEST instructor.
- Most students agree they were able to manage important information in this course due to the modeling and teaching methods used.
- Most students agree the concept of having two instructors supported them better to understand course content.



**TO EXPLORE THIS MODEL IN YOUR
COURSE, PLEASE CONTACT:**

MCC Curriculum & Instruction
ci@mccneb.edu