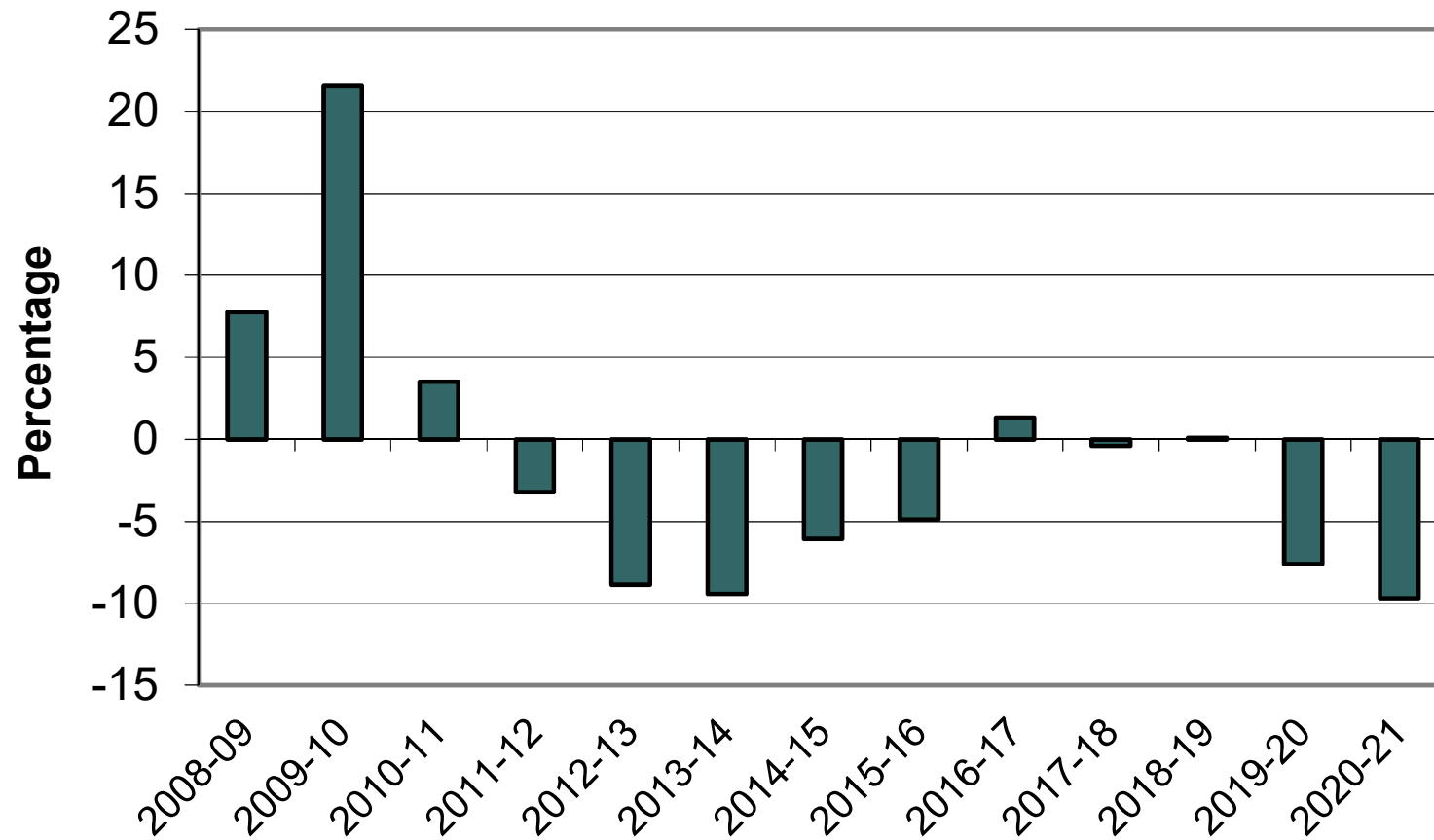


# METROPOLITAN COMMUNITY COLLEGE FTE STUDENT ENROLLMENT GROWTH





**2020-21 Full-Time Equivalent (FTE) Enrollments in Community College Courses by Category**

Category of Courses	Central		Metro		Mid-Plains		Northeast		Southeast		Western		Total	
	FTE	% of Total	FTE	% of Total	FTE	% of Total	FTE	% of Total	FTE	% of Total	FTE	% of Total	FTE	% of Total
Academic Transfer % of Total Academic Transfer	676 14%	20.0%	1,117 22%	13.5%	715 14%	54.3%	1,298 26%	45.5%	864 17%	15.0%	331 7%	32.8%	5,001 100%	22.1%
Academic Support % of Total Academic Support	341 7%	10.1%	3,090 60%	37.3%	23 0%	1.7%	192 4%	6.7%	1,380 27%	24.0%	128 2%	12.7%	5,153 100%	22.8%
Undeclared/Non-Degree % of Total Undeclared/NonDeg	642 55%	19.0%	160 14%	1.9%	22 2%	1.7%	10 1%	0.4%	279 24%	4.9%	60 5%	5.9%	1,173 100%	5.2%
Foundations Education % of Total Foundations Educ	99 11%	2.9%	409 48%	4.9%	60 7%	4.6%	49 6%	1.7%	186 22%	3.2%	57 7%	5.7%	860 100%	3.8%
Subtotal: Academic % of Total Academic	1,758 14%	52.0%	4,776 39%	57.6%	820 7%	62.2%	1,549 13%	54.3%	2,709 22%	47.1%	576 5%	57.1%	12,187 100%	53.9%
Applied Technology (Class 1) % of Total Appl Tech Class 1	860 18%	25.4%	1,664 34%	20.1%	263 5%	20.0%	528 11%	18.5%	1,397 29%	24.3%	184 4%	18.2%	4,896 100%	21.7%
Applied Technology (Class 2) % of Total Appl Tech Class 2	760 14%	22.5%	1,849 34%	22.3%	235 4%	17.8%	773 14%	27.1%	1,646 30%	28.6%	249 5%	24.7%	5,513 100%	24.4%
Subtotal: Technology % of Total Technology	1,620 16%	48.0%	3,513 34%	42.4%	498 5%	37.8%	1,301 12%	45.7%	3,043 29%	52.9%	433 4%	42.9%	10,408 100%	46.1%
GRAND TOTAL % of Total	3,377 15%	100%	8,289 37%	100%	1,318 6%	100%	2,849 13%	100%	5,752 25%	100%	1,010 4%	100%	22,596 100%	100%
Academic Support plus Class 1 & Class 2 Applied Technology % of Total Academic Support plus Class 1 & Class 2 Applied Technology	1,961 13%	58.1%	6,603 42%	79.7%	521 3%	39.5%	1,493 10%	52.4%	4,423 28%	76.9%	561 4%	55.6%	15,561 100%	68.9%

Source: CCPE Report, Postsecondary Education Operating and State Aid Budget Recommendations 2021-23 Biennium

Note: Non-foundation academic courses are allocated by declared student major as of the tenth (10th) instructional day to academic transfer, academic support, and undeclared/non-degree.