



Instructional Costs and Productivity
by Academic Discipline

Johnson County Community College
Overland Park, Kansas

Methodology

The benchmark or refined means were calculated for all academic disciplines where data were reported by five or more institutions within a discipline as follows.

- A variable, such as instructional expenditures per student credit hour taught, was calculated for each reporting institution and data were grouped by academic discipline.
- An initial mean and standard deviation were calculated from the valid values for all institutions reporting data for a given academic discipline.
- To prevent undue influence from a deviant or unusual data value on the data set, discrete institutional responses that were two standard deviations above or below the initial mean were identified. These responses were identified as “outliers” and were deleted from further calculations.
- The “refined mean” was then calculated from the remaining responses. This refined mean is the national benchmark.

Participating Institutions

The fifty institutions participating in the 2004 Kansas Study include the following:

Alabama

Gadsden State Community College

Arkansas

NorthWest Arkansas Community College

Arizona

Central Arizona College
Mohave Community College
Pima Community College

California

Crafton Hills College

Florida

Pensacola Junior College

Illinois

Black Hawk College
Oakton Community College

Kansas

Cowley County Community College, Arkansas City
Cowley County Community College Southside Education Center
Johnson County Community College
Kansas City Kansas Community College

Kentucky

Hopkinsville Community College

Louisiana

Bossier Parish Community College
Nunez Community College

Massachusetts

Middlesex Community College

Maine

Central Maine Community College

Michigan

Jackson Community College

Missouri

Jefferson College
Metropolitan Community Colleges, Kansas City
St. Charles Community College

Montana

Montana State University-Billings College of Technology
Montana State University - Great Falls College Of Technology

Nebraska

Metropolitan Community College
Southeast Community College

New Jersey

Raritan Valley Community College

New Mexico

Albuquerque Technical Vocational Institute
NMSU-Dona Ana Branch Community College

New York

Monroe Community College

Ohio

Lorain County Community College
Northwest State Community College
Sinclair Community College

Pennsylvania

Bucks County Community College
Community College of Allegheny County

Tennessee

Chattanooga State Technical Community College
Cleveland State Community College
Columbia State Community College
Dyersburg State Community College
Motlow State Community College
Nashville State Technical Community College
Northeast State Technical Community College
Pellissippi State Technical Community College
Roane State Community College
Southwest Tennessee Community College
Volunteer State Community College
Walters State Community College

Texas

North Harris Montgomery Community College District

Washington

Highline Community College

Wyoming

Laramie County Community College

Academic Disciplines

The following list includes the 82 disciplines from the 2004 Kansas Study for which data were provided by five or more institutions.

Accounting, Accounting Technician, Bookkeeping
Administration of Justice, Criminal Justice, Correctional Science
Administrative and Secretarial Services
Agricultural, Forestry, & Fisheries
Aircraft Mechanic, Aviation Technology
Anthropology
Architectural Engineering Technologies
Art-Art Studies, General
Automotive Technology
Biological Sciences-Life Sciences
Business Administration and Management, General
Chemistry, General
Child Care and Support Services Management
Civil Engineering Technology
Communications
Communications Technology-Technician
Computer and Information Sciences, General
Construction Building Technology
Culinary Arts and Related Services
Dance
Dental Assistant
Dental Hygienist
Design & Applied Arts, Commercial & Graphic Arts
Developmental English-Reading
Developmental Math
Drafting Technology General (including CAD)
Drama-Theatre Arts, General
Early Childhood Education
Economics
Education, General
Electrical & Electronic Engineering Related Technologies-Technicians
Electrical and Power Transmission Installers
Electromechanical Technology
Emergency Medical Technology-Technician (EMT Paramedic)
Engineering Related Technologies
Engineering, General
English Language and Literature (excluding developmental)
Environmental Control Technologies-Technicians
ESL, Second Language Learning
Finance, General
Fire Science
Foods, Nutrition, and Wellness Studies
Foreign Languages and Literatures
Geography
Grounds and Turf Management, Horticulture
Health Information-Medical Records Technology
Health Professions and Related-Clinical Sciences
Heating, Air Conditioning, and Refrigeration
History
Hospitality Administration-Management, General
Human Resources Management
Humanities
Industrial Production Technologies-Technicians
Interpreter Training, Sign Language Interpreter
Journalism
Liberal Arts and Sciences-Liberal Studies
Licensed Practical Nurse

Life Skills, Basic Skills
Marketing
Mathematics (excluding developmental)
Mechanical Engineering Technology
Medical Radiologic Technology-Radiation Therapist
Multi-Interdisciplinary Studies
Music, General
Nursing
Occupational Therapist Assistant
Paralegal, Legal Assistant
Philosophy and Religion
Physical Education
Physical Sciences
Physical Therapist Assistant
Political Science
Pre-Elementary-Kindergarten Teacher Education
Precision Metal Workers
Psychology
Public Administration & Services
Real Estate
Respiratory Care
Social Sciences
Sociology
Speech and Rhetorical Studies
Surgical Technology

Schedule

Important dates in this process were:

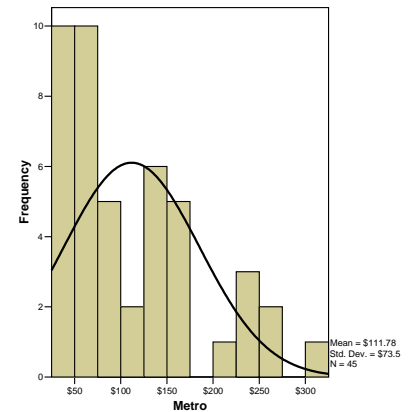
- January – May, 2004: Enrollment form and data confidentiality agreement due
- February – May, 2004: Collect data by academic discipline for 2002-2003
- May 31, 2004: Completed data templates due
- November, 2004: Reports available on the website

A comparison of cost per student credit hour by Academic Discipline is provided in Table 1. Programs where Metro's cost per student credit hour is less than the National refined means have been highlighted.

TABLE 1
INSTRUCTIONAL COST PER STUDENT CREDIT HOUR BY ACADEMIC DISCIPLINE
INSTITUTIONAL DATA AND NATIONAL REFINED MEANS
2002-2003 REPORTING YEAR

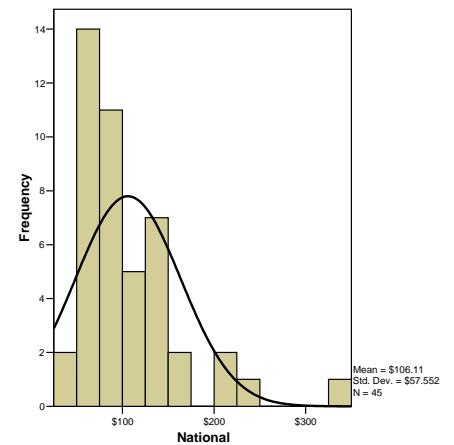
Academic Discipline	Metro	National
Respiratory Care	\$313	\$334
Nursing	\$264	\$228
Precision Metal Workers	\$259	\$149
Engineering, General	\$237	\$154
Drafting Technology General (including CAD)	\$234	\$121
Civil Engineering Technology	\$225	\$216
Licensed Practical Nurse	\$201	\$125
Automotive Technology	\$174	\$137
Heating, Air Conditioning, and Refrigeration	\$167	\$104
Design & Applied Arts, Commercial & Graphic Arts	\$166	\$140
Interpreter Training, Sign Language Interpreter	\$162	\$116
Surgical Technology	\$151	\$222
Architectural Engineering Technologies	\$147	\$137
Dental Assistant	\$145	\$156
Grounds and Turf Management, Horticulture	\$134	\$141
Electrical & Electronic Engineering Related Techno	\$130	\$149
Humanities	\$127	\$66
Electrical and Power Transmission Installers	\$125	\$102
Culinary Arts and Related Services	\$120	\$118
Computer and Information Sciences, General	\$109	\$88
Child Care and Support Services Management	\$92	\$87
Paralegal, Legal Assistant	\$92	\$99
Music, General	\$90	\$87
Art-Art Studies, General	\$88	\$65
Accounting, Accounting Technician, Bookkeeping	\$80	\$83
Physical Sciences	\$73	\$87
Life Skills, Basic Skills	\$69	\$90
Philosophy and Religion	\$65	\$45
English Language and Literature (excluding develop	\$64	\$68
Biological Sciences-Life Sciences	\$63	\$66
Administration of Justice, Criminal Justice, Corre	\$59	\$69
Business Administration and Management, General	\$58	\$79
Marketing	\$58	\$93
Mathematics (excluding developmental)	\$58	\$74
Administrative and Secretarial Services	\$57	\$92
Economics	\$49	\$60
Political Science	\$48	\$50
Geography	\$45	\$68
Sociology	\$41	\$51
History	\$37	\$52
Real Estate	\$35	\$48
Psychology	\$33	\$50
Drama-Theatre Arts, General	\$31	\$92
Foreign Languages and Literatures	\$30	\$63
Speech and Rhetorical Studies	\$25	\$54

Metro has 24 academic programs (53.3%) offered below the national refined means for cost per student credit hour



Metro's Average

National Average of the Means

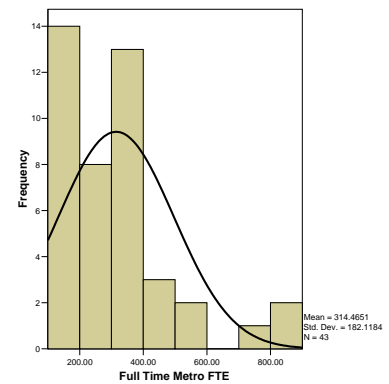


A comparison of student credit hours taught by full-time FTE faculty by Academic Discipline is provided in Table 2. Programs where Metro's faculty are instructing more than the National refined means have been highlighted.

TABLE 2
STUDENT CREDIT HOURS TAUGHT BY FULL-TIME FTE FACULTY
BY ACADEMIC DISCIPLINE
FALL 2002

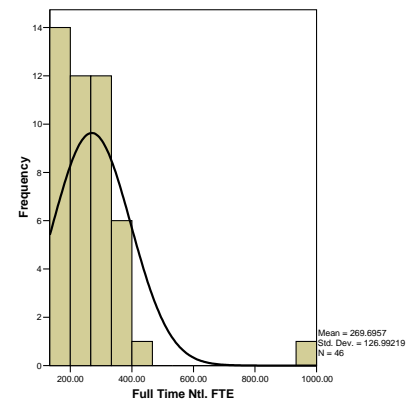
Academic Discipline	Metro	National
Life Skills, Basic Skills	848	314
Grounds and Turf Management, Horticulture	833	324
Paralegal, Legal Assistant	798	234
Real Estate	528	424
Humanities	527	376
Speech and Rhetorical Studies	446	388
Economics	438	359
Child Care and Support Services Management	389	252
Business Administration and Management, General	388	307
Administration of Justice, Criminal Justice, Corre	386	296
Philosophy and Religion	375	231
Foreign Languages and Literatures	360	262
Mathematics (excluding developmental)	345	305
Music, General	335	323
Political Science	330	290
Computer and Information Sciences, General	324	230
Precision Metal Workers	321	321
English Language and Literature (excluding develop	321	303
Biological Sciences-Life Sciences	320	368
Administrative and Secretarial Services	307	205
Dental Assistant	290	172
Physical Sciences	289	382
Geography	288	286
Surgical Technology	287	321
Accounting, Accounting Technician, Bookkeeping	283	282
Interpreter Training, Sign Language Interpreter	266	348
Marketing	247	204
Architectural Engineering Technologies	214	203
Civil Engineering Technology	195	158
Electrical & Electronic Engineering Related Techno	195	177
Culinary Arts and Related Services	180	190
Licensed Practical Nurse	171	158
Heating, Air Conditioning, and Refrigeration	159	156
Electrical and Power Transmission Installers	154	184
Art-Art Studies, General	154	232
History	140	214
Automotive Technology	135	197
Drafting Technology General (including CAD)	116	174
Engineering, General	105	167
Design & Applied Arts, Commercial & Graphic Arts	102	174
Psychology	102	149
Sociology	101	145
Respiratory Care	.	946
Nursing	.	237
Drama-Theatre Arts, General	.	252

Metro full-time faculty teach more than the national refined mean student credit hours in 25 academic disciplines (59.5%)



Metro's Average

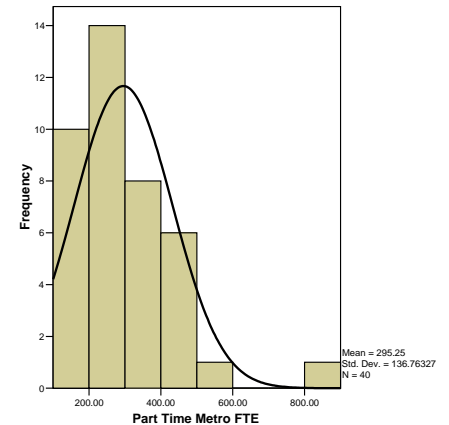
National Average of the Means



A comparison of student credit hours taught by part-time FTE faculty by Academic Discipline is provided in Table 3. Programs where Metro's faculty are instructing more than the National refined means have been highlighted.

TABLE 3
STUDENT CREDIT HOURS TAUGHT BY PART-TIME FTE FACULTY
BY ACADEMIC DISCIPLINE
FALL 2002

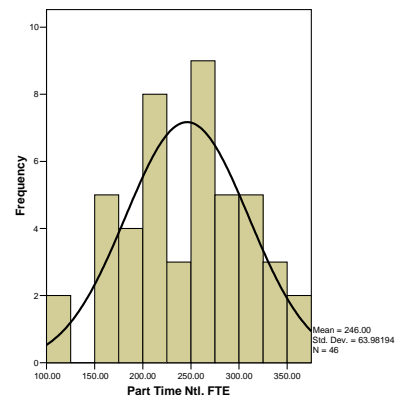
Academic Discipline	Metro	National
Drama-Theatre Arts, General	848	259
Computer and Information Sciences, General	440	235
Humanities	435	343
Grounds and Turf Management, Horticulture	417	292
Economics	415	307
Physical Sciences	407	354
Real Estate	406	364
Music, General	371	296
Precision Metal Workers	366	314
Speech and Rhetorical Studies	359	335
English Language and Literature (excluding develop	356	290
Business Administration and Management, General	354	267
Biological Sciences-Life Sciences	345	316
Mathematics (excluding developmental)	344	265
Heating, Air Conditioning, and Refrigeration	309	256
Geography	291	255
Respiratory Care	286	294
Interpreter Training, Sign Language Interpreter	275	335
Surgical Technology	270	307
Administrative and Secretarial Services	265	183
Marketing	264	218
Accounting, Accounting Technician, Bookkeeping	263	265
Administration of Justice, Criminal Justice, Corre	260	290
Nursing	245	220
Culinary Arts and Related Services	244	268
Child Care and Support Services Management	228	234
Art-Art Studies, General	211	249
Licensed Practical Nurse	205	174
Electrical and Power Transmission Installers	200	270
Electrical & Electronic Engineering Related Techno	196	174
Psychology	195	178
Foreign Languages and Literatures	188	219
Drafting Technology General (including CAD)	180	183
Political Science	170	269
Architectural Engineering Technologies	158	182
Philosophy and Religion	149	210
Design & Applied Arts, Commercial & Graphic Arts	123	203
History	120	159
Automotive Technology	102	166
Life Skills, Basic Skills	.	213
Paralegal, Legal Assistant	.	159
Dental Assistant	.	102
Civil Engineering Technology	.	200
Engineering, General	.	202
Sociology	.	118



Metro's Average

National Average of the Means

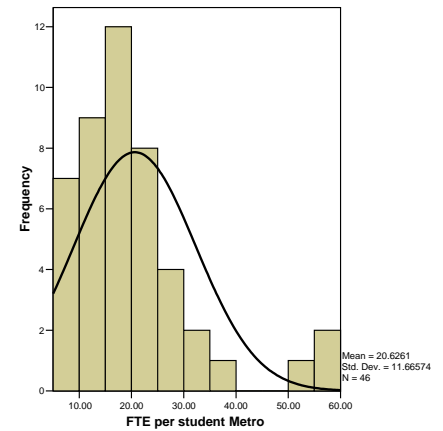
Metro part-time faculty teach more than the National refined mean student credit hours in 22 academic disciplines (56.4%)



A comparison of FTE student per FTE faculty by Academic Discipline is provided in Table 4. Programs where Metro's student per faculty number is greater than the National refined means have been highlighted.

TABLE 4
FTE STUDENTS PER FTE FACULTY
BY ACADEMIC DISCIPLINE
FALL 2002

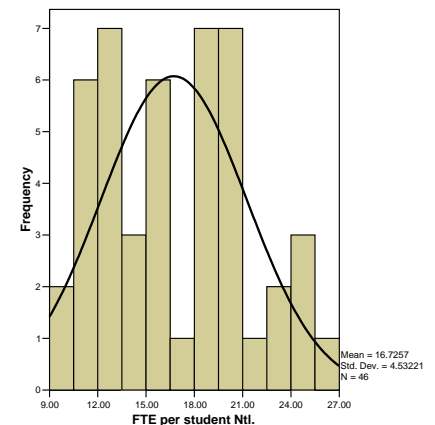
Academic Discipline	Metro	National
Drama-Theatre Arts, General	56.5	18.16
Life Skills, Basic Skills	56.5	20.19
Paralegal, Legal Assistant	53.2	14.94
Grounds and Turf Management, Horticulture	37	19.51
Humanities	30.6	24.19
Real Estate	29.8	26.37
Economics	28.4	22.36
Speech and Rhetorical Studies	26.4	24.87
Physical Sciences	25.1	24.59
Business Administration and Management, General	24.7	18.99
Computer and Information Sciences, General	24.4	15.85
Music, General	23.4	20.97
Precision Metal Workers	23.3	20.06
English Language and Literature (excluding develop	23	19.73
Mathematics (excluding developmental)	22.9	18.49
Biological Sciences-Life Sciences	22.5	22.97
Administration of Justice, Criminal Justice, Corre	20	19.35
Administrative and Secretarial Services	19.5	13.43
Dental Assistant	19.4	11.28
Geography	19.3	18.23
Respiratory Care	19.1	19.81
Surgical Technology	18.5	20.97
Child Care and Support Services Management	18.3	15.29
Accounting, Accounting Technician, Bookkeeping	18.2	18.6
Interpreter Training, Sign Language Interpreter	17.9	23.1
Philosophy and Religion	17.5	13.98
Marketing	17.2	15.4
Foreign Languages and Literatures	16.9	15.98
Nursing	16.4	15.32
Political Science	14.7	18.89
Culinary Arts and Related Services	13.6	14.01
Heating, Air Conditioning, and Refrigeration	13.2	10.96
Licensed Practical Nurse	13.1	10.9
Electrical & Electronic Engineering Related Techno	13	12.05
Civil Engineering Technology	13	11.1
Art-Art Studies, General	12.9	16.55
Architectural Engineering Technologies	12.8	12.99
Electrical and Power Transmission Installers	11.6	16.39
Drafting Technology General (including CAD)	8.8	11.64
History	8.7	12.02
Automotive Technology	8.2	12.76
Design & Applied Arts, Commercial & Graphic Arts	7.5	12.27
Psychology	7.4	10.15
Engineering, General	7	11.4
Sociology	6.7	9.53



Metro's Average

The number of FTE students per FTE faculty at Metro is greater than the National refined means in 28 academic disciplines (62.2%)

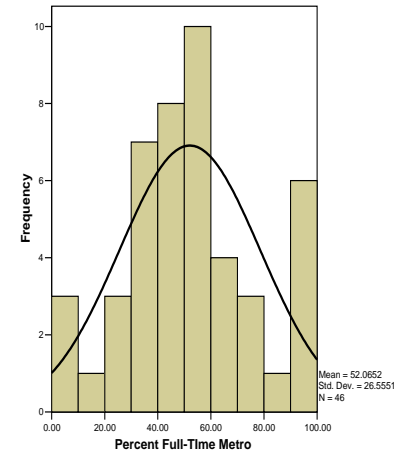
National Average of the Means



A comparison of percent of student credit hours taught by full-time faculty by Academic Discipline is provided in Table 5. Programs where the percent of Metro's student credit hours taught by full-time faculty are greater than the National refined means have been highlighted.

TABLE 5
PERCENT OF STUDENT CREDIT HOURS TAUGHT BY FULL-TIME FACULTY
BY ACADEMIC DISCIPLINE
FALL 2002

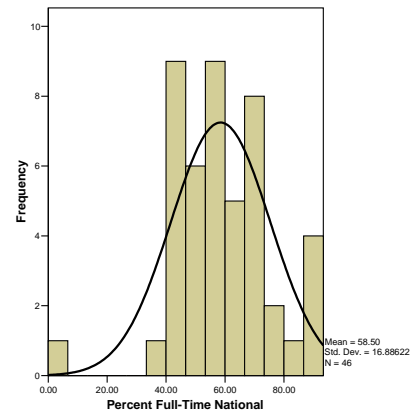
Academic Discipline	Metro	National
Civil Engineering Technology	100	70
Dental Assistant	100	78
Engineering, General	100	63
Licensed Practical Nurse	100	92
Nursing	100	88
Respiratory Care	100	93
Precision Metal Workers	84	59
Paralegal, Legal Assistant	72	47
Administrative and Secretarial Services	70	64
Surgical Technology	70	89
Architectural Engineering Technologies	69	73
Automotive Technology	69	82
Drafting Technology General (including CAD)	67	67
Humanities	66	53
Grounds and Turf Management, Horticulture	59	48
Heating, Air Conditioning, and Refrigeration	58	74
Computer and Information Sciences, General	57	55
Culinary Arts and Related Services	55	66
Finance, General	54	46
Accounting, Accounting Technician, Bookkeeping	53	72
Business Administration and Management, General	53	59
Mathematics (excluding developmental)	53	67
Electrical and Power Transmission Installers	50	42
Geography	50	40
Sociology	49	57
Electrical & Electronic Engineering Related Technologies-Technicians	48	67
Physical Sciences	48	66
Economics	47	67
Design & Applied Arts, Commercial & Graphic Arts	46	59
Speech and Rhetorical Studies	45	43
Administration of Justice, Criminal Justice, Correctional Science	41	44
Child Care and Support Services Management	41	47
Psychology	39	55
Foreign Languages and Literatures	37	44
Political Science	33	48
Biological Sciences-Life Sciences	32	69
English Language and Literature (excluding developmental)	32	54
Life Skills, Basic Skills	32	43
History	31	54
Art-Art Studies, General	25	43
Interpreter Training, Sign Language Interpreter	21	47
Philosophy and Religion	20	36
Marketing	19	56
Drama-Theatre Arts, General	0	61
Music, General	0	40
Real Estate	0	4



National Average of the Means

Metro's Average

34.9% of Metro's academic disciplines taught by full-time faculty are above the National refined means

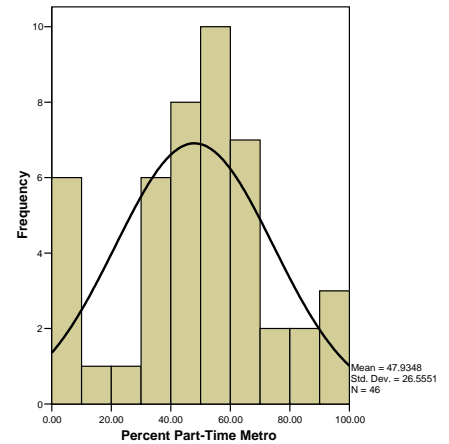


A comparison of percent of student credit hours taught by part-time faculty by Academic Discipline is provided in Table 6. Programs where the percent of Metro's student credit hours taught by part-time faculty are greater than the National refined means have been highlighted.

TABLE 6
PERCENT OF STUDENT CREDIT TAUGHT BY PART-TIME FACULTY
BY ACADEMIC DISCIPLINE
FALL 2002

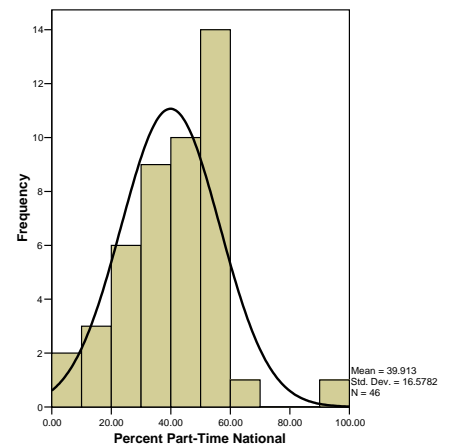
Academic Discipline	Metro	National
Drama-Theatre Arts, General	100	39
Music, General	100	60
Real Estate	100	93
Marketing	81	44
Philosophy and Religion	80	55
Interpreter Training, Sign Language Interpreter	79	53
Art-Art Studies, General	75	56
History	69	44
Biological Sciences-Life Sciences	68	30
English Language and Literature (excluding developmental)	68	45
Life Skills, Basic Skills	68	57
Political Science	67	50
Foreign Languages and Literatures	63	51
Psychology	61	43
Administration of Justice, Criminal Justice, Correctional Science	59	52
Child Care and Support Services Management	59	52
Speech and Rhetorical Studies	55	52
Design & Applied Arts, Commercial & Graphic Arts	54	41
Economics	53	33
Electrical & Electronic Engineering Related Technologies-Technicians	52	25
Physical Sciences	52	33
Sociology	51	43
Electrical and Power Transmission Installers	50	58
Geography	50	54
Accounting, Accounting Technician, Bookkeeping	47	28
Business Administration and Management, General	47	40
Mathematics (excluding developmental)	47	32
Finance, General	46	54
Culinary Arts and Related Services	45	31
Computer and Information Sciences, General	43	43
Heating, Air Conditioning, and Refrigeration	42	25
Grounds and Turf Management, Horticulture	41	52
Humanities	34	47
Drafting Technology General (including CAD)	33	33
Architectural Engineering Technologies	31	24
Automotive Technology	31	18
Administrative and Secretarial Services	30	33
Surgical Technology	30	11
Paralegal, Legal Assistant	28	53
Precision Metal Workers	16	41
Civil Engineering Technology	0	28
Dental Assistant	0	22
Engineering, General	0	37
Licensed Practical Nurse	0	8
Nursing	0	11
Respiratory Care	0	2

75.0% of Metro's academic disciplines taught by part-time faculty are above the National refined means



Metro's Average

National Average of the Means





DATA APPENDIX

TABLE 3-2
INSTRUCTIONAL COST PER STUDENT CREDIT HOUR BY ACADEMIC DISCIPLINE
INSTITUTIONAL DATA AND NATIONAL REFINED MEANS
2002-2003 REPORTING YEAR

Metropolitan Community College, Omaha

Academic Discipline	Instructional Costs	
	Reporting Institution	National Refined Means
Accounting, Accounting Technician, Bookkeeping	\$80	\$83
Administration of Justice, Criminal Justice, Correctional Science	\$59	\$69
Administrative and Secretarial Services	\$57	\$92
Architectural Engineering Technologies	\$147	\$137
Art-Art Studies, General	\$88	\$65
Automotive Technology	\$174	\$137
Biological Sciences-Life Sciences	\$63	\$66
Business Administration and Management, General	\$58	\$79
Child Care and Support Services Management	\$92	\$87
Civil Engineering Technology	\$225	\$216
Computer and Information Sciences, General	\$109	\$88
Culinary Arts and Related Services	\$120	\$118
Dental Assistant	\$145	\$156
Design & Applied Arts, Commercial & Graphic Arts	\$166	\$140
Drafting Technology General (including CAD)	\$234	\$121
Drama-Theatre Arts, General	\$31	\$92
Economics	\$49	\$60
Electrical & Electronic Engineering Related Technologies-Technicians	\$130	\$149
Electrical and Power Transmission Installers	\$125	\$102
Engineering, General	\$237	\$154
English Language and Literature (excluding developmental)	\$64	\$68
Foreign Languages and Literatures	\$30	\$63
Geography	\$45	\$68
Grounds and Turf Management, Horticulture	\$134	\$141
Heating, Air Conditioning, and Refrigeration	\$167	\$104
History	\$37	\$52
Humanities	\$127	\$66
Interpreter Training, Sign Language Interpreter	\$162	\$116
Licensed Practical Nurse	\$201	\$125
Life Skills, Basic Skills	\$69	\$90
Marketing	\$58	\$93
Mathematics (excluding developmental)	\$58	\$74
Music, General	\$90	\$87
Nursing	\$264	\$228
Paralegal, Legal Assistant	\$92	\$99
Philosophy and Religion	\$65	\$45
Physical Sciences	\$73	\$87
Political Science	\$48	\$50
Precision Metal Workers	\$259	\$149
Psychology	\$33	\$50
Real Estate	\$35	\$48
Respiratory Care	\$313	\$334
Sociology	\$41	\$51
Speech and Rhetorical Studies	\$25	\$54
Surgical Technology	\$151	\$222

*Outlier

Refined means: calculation of the mean based on data from all reporting institutions and excludes outliers.
 Outlier: a data point outside + or - 2 times the standard deviation.

TABLE 2-2
STUDENT CREDIT HOURS TAUGHT
AND FTE STUDENTS PER FTE FACULTY
BY ACADEMIC DISCIPLINE
INSTITUTIONAL DATA AND NATIONAL REFINED MEANS
FALL 2002

Metropolitan Community College	Student Credit Hours Taught Per						FTE Student Per FTE Faculty	
	Full-Time Faculty FTE		Part-Time Faculty FTE		Other Employees FTE		Reporting Institution	National Refined Mean
	Reporting Institution	National	Reporting Institution	National	Reporting Institution	National		
		Refined Mean		Refined Mean		Refined Mean		
Accounting, Accounting Technician, Bookkeeping	283	282	263	265	--	141	18.2	18.60
Administration of Justice, Criminal Justice, Correctional Science	386	296	260	290	--	393	20.0	19.35
Administrative and Secretarial Services	307	205	265	183	--	201	19.5	13.43
Architectural Engineering Technologies	214	203	158	182	--	--	12.8	12.99
Art-Art Studies, General	154	232	211	249	--	464	12.9	16.55
Automotive Technology	135	197	102	166	--	--	8.2	12.76
Biological Sciences-Life Sciences	320	368	345	316	--	215	22.5	22.97
Business Administration and Management, General	388	307	354	267	--	199	24.7	18.99
Child Care and Support Services Management	389	252	228	234	--	--	18.3	15.29
Civil Engineering Technology	195	158	--	200	--	--	13.0	11.10
Computer and Information Sciences, General	324	230	440 *	235	--	203	24.4 *	15.85
Culinary Arts and Related Services	180	190	244	268	--	105	13.6	14.01
Dental Assistant	290	172	--	102	--	--	19.4	11.28
Design & Applied Arts, Commercial & Graphic Arts	102	174	123	203	--	--	7.5	12.27
Drafting Technology General (including CAD)	116	174	180	183	--	--	8.8	11.64
Drama-Theatre Arts, General	--	252	848 *	259	--	--	56.5 *	18.16
Economics	438	359	415	307	--	--	28.4	22.36
Electrical & Electronic Engineering Related Technologies-Technicians	195	177	196	174	--	203	13.0	12.05
Electrical and Power Transmission Installers	154	184	200	270	--	--	11.6	16.39
Engineering, General	105	167	--	202	--	--	7.0	11.40
English Language and Literature (excluding developmental)	321	303	356	290	--	246	23.0	19.73
Finance, General	360	262	188	219	--	--	16.9	15.98
Foreign Languages and Literatures	288	286	291	255	--	257	19.3	18.23
Geography	833 *	324	417	292	--	--	37.0 *	19.51
Grounds and Turf Management, Horticulture	159	156	309	256	--	--	13.2	10.96
Heating, Air Conditioning, and Refrigeration	140	214	120	159	--	--	8.7	12.02
History	527	376	435	343	--	341	30.6	24.19
Humanities	266	348	275	335	--	--	17.9	23.10
Interpreter Training, Sign Language Interpreter	171	158	205	174	--	--	13.1	10.90
Licensed Practical Nurse	848 *	314	--	213	--	--	56.5 *	20.19
Life Skills, Basic Skills	247	204	264	218	--	--	17.2	15.40
Marketing	345	305	344	265	--	--	22.9	18.49
Mathematics (excluding developmental)	335	323	371	296	--	285	23.4	20.97
Music, General	--	237	245	220	--	--	16.4	15.32
Nursing	798 *	234	--	159	--	540	53.2 *	14.94
Paralegal, Legal Assistant	375	231	149	210	--	--	17.5	13.98
Philosophy and Religion	289	382	407	354	--	316	25.1	24.59
Physical Sciences	330	290	170	269	--	150	14.7	18.89
Political Science	321	321	366	314	--	219	23.3	20.06
Precision Metal Workers	102	149	195	178	--	--	7.4	10.15
Psychology	528	424	406	364	--	289	29.8	26.37
Real Estate	--	946	286	294	--	--	19.1	19.81
Respiratory Care	101	145	--	118	--	--	6.7	9.53
Sociology	446	388	359	335	--	258	26.4	24.87
Speech and Rhetorical Studies	287	321	270	307	--	180	18.5	20.97
Surgical Technology	430	186	550	324	--	--	30.7	12.79

*Outlier

Refined means: calculation of the mean based on data from all reporting institutions and excludes outliers.

Outlier: a data point outside + or - 2 times the standard deviation.

TABLE 1-2
PERCENT OF STUDENT CREDIT HOURS TAUGHT BY FACULTY TYPE AND ACADEMIC DISCIPLINE
INSTITUTIONAL DATA AND NATIONAL REFINED MEANS
FALL 2002

Metropolitan Community College, Omaha

Academic Discipline	Percent of Student Credit Hours Taught By					
	Full-Time Faculty		Part-Time Faculty		Other Full-Time Employees	
	Reporting Institution	National Refined Means	Reporting Institution	National Refined Means	Reporting Institution	National Refined Means
Accounting, Accounting Technician, Bookkeeping	53	72	47	28	0	0
Administration of Justice, Criminal Justice, Correctional Science	41	44	59	52	0	1
Administrative and Secretarial Services	70	64	30	33	0	1
Architectural Engineering Technologies	69	73	31	24	0	0
Art-Art Studies, General	25	43	75	56	0	0
Automotive Technology	69	82	31	18	0	0
Biological Sciences-Life Sciences	32 *	69	68 *	30	0	0
Business Administration and Management, General	53	59	47	40	0	0
Child Care and Support Services Management	41	47	59	52	0	0
Civil Engineering Technology	100	70	0	28	0	0
Computer and Information Sciences, General	57	55	43	43	0	0
Culinary Arts and Related Services	55	66	45	31	0	1
Dental Assistant	100	78	0	22	0	0
Design & Applied Arts, Commercial & Graphic Arts	46	59	54	41	0	0
Drafting Technology General (including CAD)	67	67	33	33	0	0
Drama-Theatre Arts, General	0	61	100	39	0	0
Economics	47	67	53	33	0	0
Electrical & Electronic Engineering Related Technologies-Technicians	48	67	52	25	0	1
Electrical and Power Transmission Installers	50	42	50	58	0	0
Engineering, General	100	63	0	37	0	0
English Language and Literature (excluding developmental)	32	54	68	45	0	1
Finance, General	54	46	46	54	0	0
Foreign Languages and Literatures	37	44	63	51	0	1
Geography	50	40	50	54	0	0
Grounds and Turf Management, Horticulture	59	48	41	52	0	0
Heating, Air Conditioning, and Refrigeration	58	74	42	25	0	0
History	31	54	69	44	0	0
Humanities	66	53	34	47	0	0
Interpreter Training, Sign Language Interpreter	21	47	79	53	0	0
Licensed Practical Nurse	100	92	0	8	0	0
Life Skills, Basic Skills	32	43	68	57	0	0
Marketing	19	56	81	44	0	0
Mathematics (excluding developmental)	53	67	47	32	0	0
Music, General	0	40	100	60	0	0
Nursing	100	88	0	11	0	0
Paralegal, Legal Assistant	72	47	28	53	0	0
Philosophy and Religion	20	36	80	55	0	1
Physical Sciences	48	66	52	33	0	0
Political Science	33	48	67	50	0	0
Precision Metal Workers	84	59	16	41	0	0
Psychology	39	55	61	43	0	1
Real Estate	0	4	100	93	0	0
Respiratory Care	100	93	0	2	0	0
Sociology	49	57	51	43	0	0
Speech and Rhetorical Studies	45	43	55	52	0	0
Surgical Technology	70	89	30	11	0	0

*Outlier

Refined means: calculation of the mean based on data from all reporting institutions and excludes outliers.
 Outlier: a data point outside + or - 2 times the standard deviation.