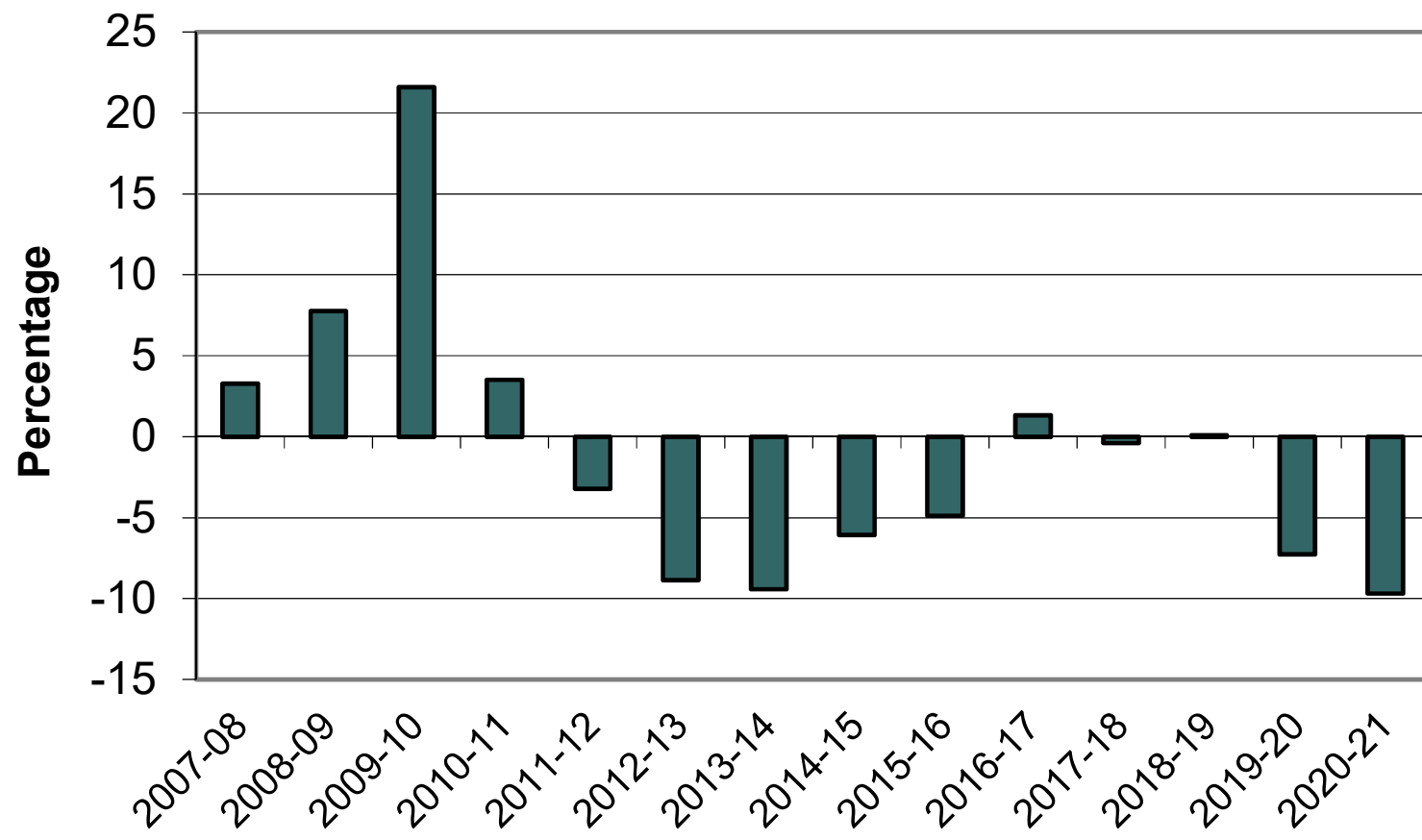


METROPOLITAN COMMUNITY COLLEGE FTE STUDENT ENROLLMENT GROWTH



Nebraska Community Colleges Reimbursable Enrollment History

	2007-08	2008-09	2009-10	2010-11	2011-12	2012-13	2013-14	2014-15	2015-16	2016-17	2017-18	2018-19	2019-20
	<i>Actual</i>	<i>Actual</i>	<i>Actual</i>	<i>Actual</i>	<i>Actual</i>	<i>Actual</i>	<i>Actual</i>	<i>Actual</i>	<i>Actual</i>	<i>Actual</i>	<i>Actual</i>	<i>Actual</i>	<i>Actual</i>
CENTRAL													
Enrollment	3,821.05	3,949.20	4,431.12	4,611.13	4,555.02	4,214.44	3,926.29	3,837.31	3,777.39	3,710.87	3,625.60	3,627.38	3,496.11
% Incr (Decr) over previous	1.67%	3.35%	12.20%	4.06%	-1.22%	-7.48%	-6.84%	-2.27%	-1.56%	-1.76%	-2.30%	0.05%	-3.62%
% Incr (Decr) since 1997-98	24.35%	28.52%	44.21%	50.07%	48.24%	37.16%	27.78%	24.88%	22.93%	20.77%	17.99%	18.05%	13.78%
% of Total CC Enrollment	12.93%	12.68%	12.55%	12.71%	12.98%	12.95%	12.96%	13.28%	13.86%	13.72%	13.67%	13.86%	14.49%
METRO													
Enrollment	10,164.63	10,951.82	13,317.48	13,786.10	13,343.80	12,159.07	11,011.84	10,341.12	9,833.88	9,963.00	9,923.17	9,934.59	9,180.93
% Incr (Decr) over previous	3.26%	7.74%	21.60%	3.52%	-3.21%	-8.88%	-9.44%	-6.09%	-4.91%	1.31%	-0.40%	0.12%	-7.59%
% Incr (Decr) since 1997-98	53.64%	65.54%	101.30%	108.38%	101.70%	83.79%	66.45%	56.31%	48.64%	50.59%	49.99%	50.16%	38.77%
% of Total CC Enrollment	34.39%	35.17%	37.70%	37.99%	38.03%	37.36%	36.35%	35.79%	36.09%	36.82%	37.41%	37.97%	38.04%
MID-PLAINS													
Enrollment	1,626.97	1,705.03	1,814.05	1,773.28	1,918.98	1,869.98	1,899.20	1,908.75	1,544.08	1,479.59	1,441.37	1,409.49	1,313.93
% Incr (Decr) over previous	-1.92%	4.80%	6.39%	-2.25%	8.22%	-2.55%	1.56%	0.50%	-19.11%	-4.18%	-2.58%	-2.21%	-6.78%
% Incr (Decr) since 1997-98	-0.76%	4.00%	10.65%	8.17%	17.05%	14.07%	15.85%	16.43%	-5.81%	-9.75%	-12.08%	-14.02%	-19.85%
% of Total CC Enrollment	5.50%	5.47%	5.14%	4.89%	5.47%	5.75%	6.27%	6.61%	5.67%	5.47%	5.43%	5.39%	5.44%
NORTHEAST													
Enrollment	3,192.71	3,140.00	3,374.37	3,489.54	3,289.34	3,343.10	3,210.33	3,132.93	3,038.03	2,986.13	2,997.04	2,938.56	2,988.40
% Incr (Decr) over previous	-3.80%	-1.65%	7.46%	3.41%	-5.74%	1.63%	-3.97%	-2.41%	-3.03%	-1.71%	0.37%	-1.95%	1.70%
% Incr (Decr) since 1997-98	14.46%	12.57%	20.97%	25.10%	17.92%	19.85%	15.09%	12.31%	8.91%	7.05%	7.44%	5.35%	7.13%
% of Total CC Enrollment	10.80%	10.08%	9.55%	9.62%	9.37%	10.27%	10.60%	10.84%	11.15%	11.04%	11.30%	11.23%	12.38%
SOUTHEAST													
Enrollment	8,776.33	9,447.12	10,335.19	10,556.20	10,019.72	9,049.09	8,419.52	7,920.21	7,415.30	7,286.84	7,002.41	6,804.63	5,888.46
% Incr (Decr) over previous	1.70%	7.64%	9.40%	2.14%	-5.08%	-9.69%	-6.96%	-5.93%	-6.37%	-1.73%	-3.90%	-2.82%	-13.46%
% Incr (Decr) since 1997-98	30.77%	40.77%	54.00%	57.29%	49.30%	34.84%	25.46%	18.02%	10.49%	8.58%	4.34%	1.39%	-12.26%
% of Total CC Enrollment	29.69%	30.33%	29.26%	29.09%	28.55%	27.80%	27.79%	27.41%	27.22%	26.93%	26.40%	26.01%	24.40%
WESTERN													
Enrollment	1,975.74	1,949.91	2,048.68	2,071.88	1,962.80	1,910.28	1,828.83	1,750.09	1,635.85	1,630.39	1,538.87	1,448.55	1,265.66
% Incr (Decr) over previous	9.64%	-1.31%	5.07%	1.13%	-5.26%	-2.68%	-4.26%	-4.31%	-6.53%	-0.33%	-5.61%	-5.87%	-12.63%
% Incr (Decr) since 1997-98	38.92%	37.10%	44.04%	45.68%	38.01%	34.31%	28.59%	23.05%	15.02%	14.63%	8.20%	1.85%	-11.01%
% of Total CC Enrollment	6.68%	6.26%	5.80%	5.71%	5.59%	5.87%	6.04%	6.06%	6.00%	6.03%	5.80%	5.54%	5.24%
TOTAL													
Enrollment	29,557.43	31,143.08	35,320.89	36,288.13	35,089.66	32,545.96	30,296.01	28,890.41	27,244.53	27,056.82	26,528.46	26,163.20	24,133.49
% Incr (Decr) over previous	1.89%	5.36%	13.41%	2.74%	-3.30%	-7.25%	-6.91%	-4.64%	-5.70%	-0.69%	-1.95%	-1.38%	-7.76%
% Incr (Decr) since 1997-98	32.84%	39.96%	58.74%	63.09%	57.70%	46.27%	36.16%	29.84%	22.44%	21.60%	19.22%	17.58%	8.46%
% of Total CC Enrollment	100.00%	100.00%	100.00%	100.00%	100.00%	100.00%	100.00%	100.00%	100.00%	100.00%	100.00%	100.00%	100.00%

2019-20 Full-Time Equivalent (FTE) Enrollments in Community College Courses by Category

Category of Courses	<u>Central</u>		<u>Metro</u>		<u>Mid-Plains</u>		<u>Northeast</u>		<u>Southeast</u>		<u>Western</u>		<u>Total</u>	
	FTE	% of Total	FTE	% of Total	FTE	% of Total	FTE	% of Total	FTE	% of Total	FTE	% of Total	FTE	% of Total
Academic Transfer	731	20.9%	1,301	14.2%	698	53.1%	1,399	46.8%	1,323	22.5%	409	32.3%	5,861	24.3%
% of Total Academic Transfer	12%		22%		12%		24%		23%		7%		100%	
Academic Support	363	10.4%	3,301	36.0%	26	2.0%	204	6.8%	857	14.6%	146	11.5%	4,897	20.3%
% of Total Academic Support	7%		67%		1%		4%		18%		3%		100%	
Undeclared/Non-Degree	615	17.6%	205	2.2%	17	1.3%	9	0.3%	366	6.2%	68	5.4%	1,280	5.3%
% of Total Undeclared/NonDeg	48%		16%		1%		1%		29%		5%		100%	
Foundations Education	108	3.1%	713	7.8%	70	5.3%	57	1.9%	217	3.7%	78	6.2%	1,243	5.2%
% of Total Foundatins Educ	9%		57%		6%		5%		17%		6%		100%	
Subtotal: Academic	1,817	52.0%	5,520	60.1%	811	61.7%	1,669	55.9%	2,763	46.9%	701	55.4%	13,281	55.0%
% of Total Academic	14%		42%		6%		13%		21%		5%		100%	
Applied Technology (Class 1)	827	23.7%	1,727	18.8%	277	21.1%	537	18.0%	1,392	23.6%	326	25.8%	5,086	21.1%
% of Total Appl Tech Class 1	16%		34%		5%		11%		27%		6%		100%	
Applied Technology (Class 2)	852	24.4%	1,934	21.1%	226	17.2%	782	26.2%	1,733	29.4%	239	18.9%	5,766	23.9%
% of Total Appl Tech Class 2	15%		34%		4%		14%		30%		4%		100%	
Subtotal: Technology	1,679	48.0%	3,661	39.9%	503	38.3%	1,319	44.1%	3,125	53.1%	565	44.6%	10,852	45.0%
% of Total Technology	15%		34%		5%		12%		29%		5%		100%	
GRAND TOTAL	3,496	100%	9,181	100%	1,314	100%	2,988	100%	5,888	100%	1,266	100%	24,133	100%
% of Total	14%		38%		5%		12%		24%		5%		100%	

Academic Support plus Class 1 & Class 2 Applied Technology Courses	2,042	58.4%	6,962	75.8%	529	40.3%	1,523	51.0%	3,982	67.6%	711	56.2%	15,749	65.3%
% of Total Academic Support plus Class 1 & Class 2 Applied Technology	13%		44%		3%		10%		25%		5%		100%	

Source: CCPE Report, Postsecondary Education Operating and State Aid Budget Recommendations 2021-23 Biennium

Note: Non-foundation academic courses are allocated by declared student major as of the tenth (10th) instructional day to academic transfer, academic support, and undeclared/non-degree.