

Sarpy Campus Preplanning

**AS PRESENTED TO THE BOARD
JUNE 2022**



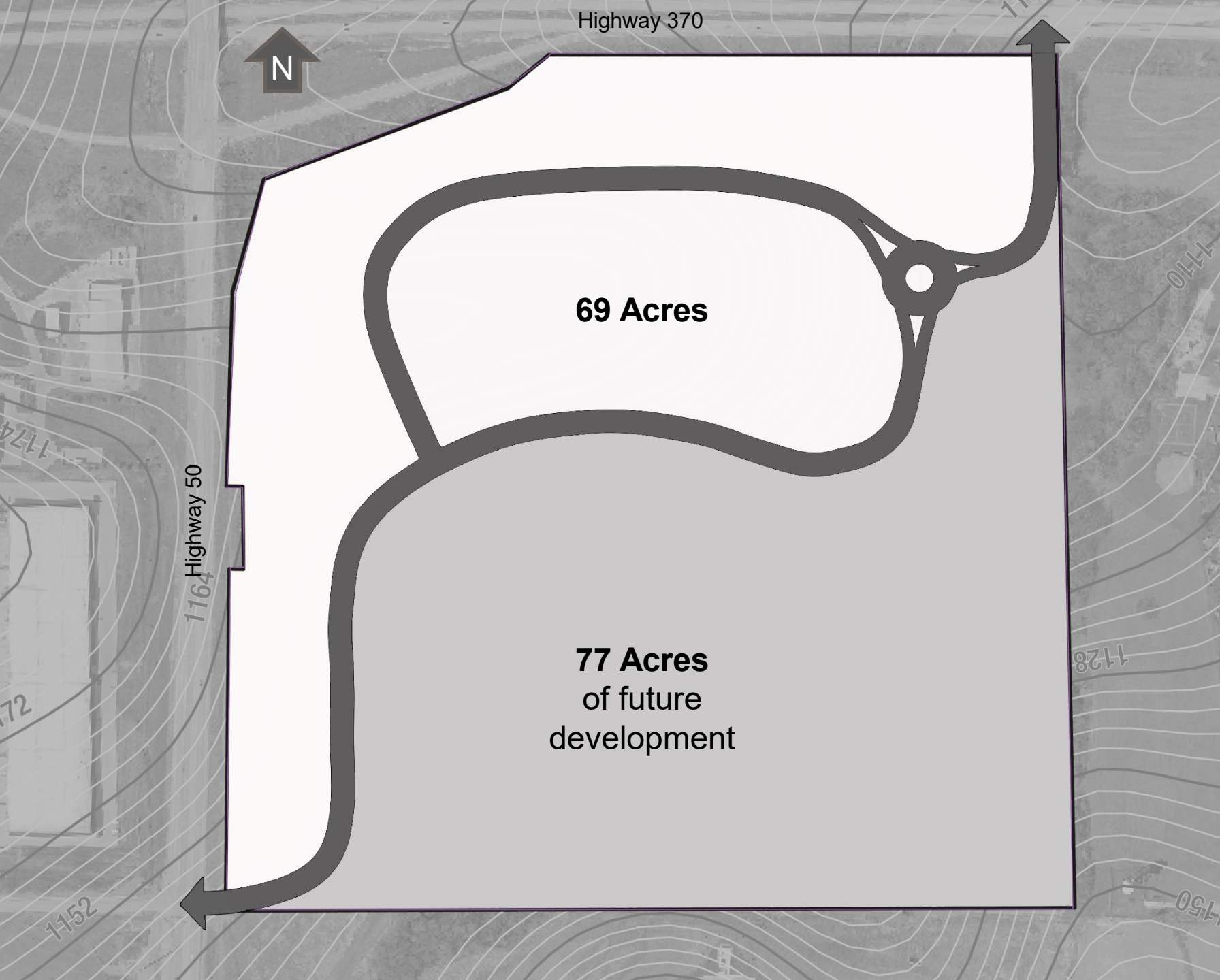
METROPOLITAN
Community College

Key Findings from Pre-Planning Research

- MCC presently has sufficient space to accommodate foreseeable enrollment growth in existing programs, generally, but faces shortages in key programs and time slots.
- Although facilities are available, additional sections will likely require new faculty and lab technician positions, especially in the technical and trades programs.
- Future development will require a wholistic, strategic approach to insure MCC continues to meet the future needs of our community. This includes our Path Forward Initiative, our technology strategies, our K-12 partnerships, industry involvement, and staffing allocations.



SARPY PROPERTY



Metropolitan Community College Sarpy Campus Development Acres

June 16, 2022



- Site Boundary
- █ Main Road
- Proposed Development
- ▒ Future Development



Metropolitan Community College

Sarpy Campus

Land Use Plan

June 16, 2022

0 500ft

LEGEND

- Site Boundary
- MCC Buildings
- Fire Station
- Commercial
- Surface Parking
- Structured Parking
- Roads
- Waterways



METROPOLITAN
Community College



Sarpy Metropolitan Community College Campus

- Roads
- Plots



METROPOLITAN
Community College

Next Steps

- Issue RFP this summer to hire firm to update MCC's 10-year Master Facility Plan.
- Continue work toward re-zoning and platting of new Sarpy property.
- Continue to seek new industry collaboration and community partnerships.
- Study all viable methods for implementation of future Master Facility Plan.