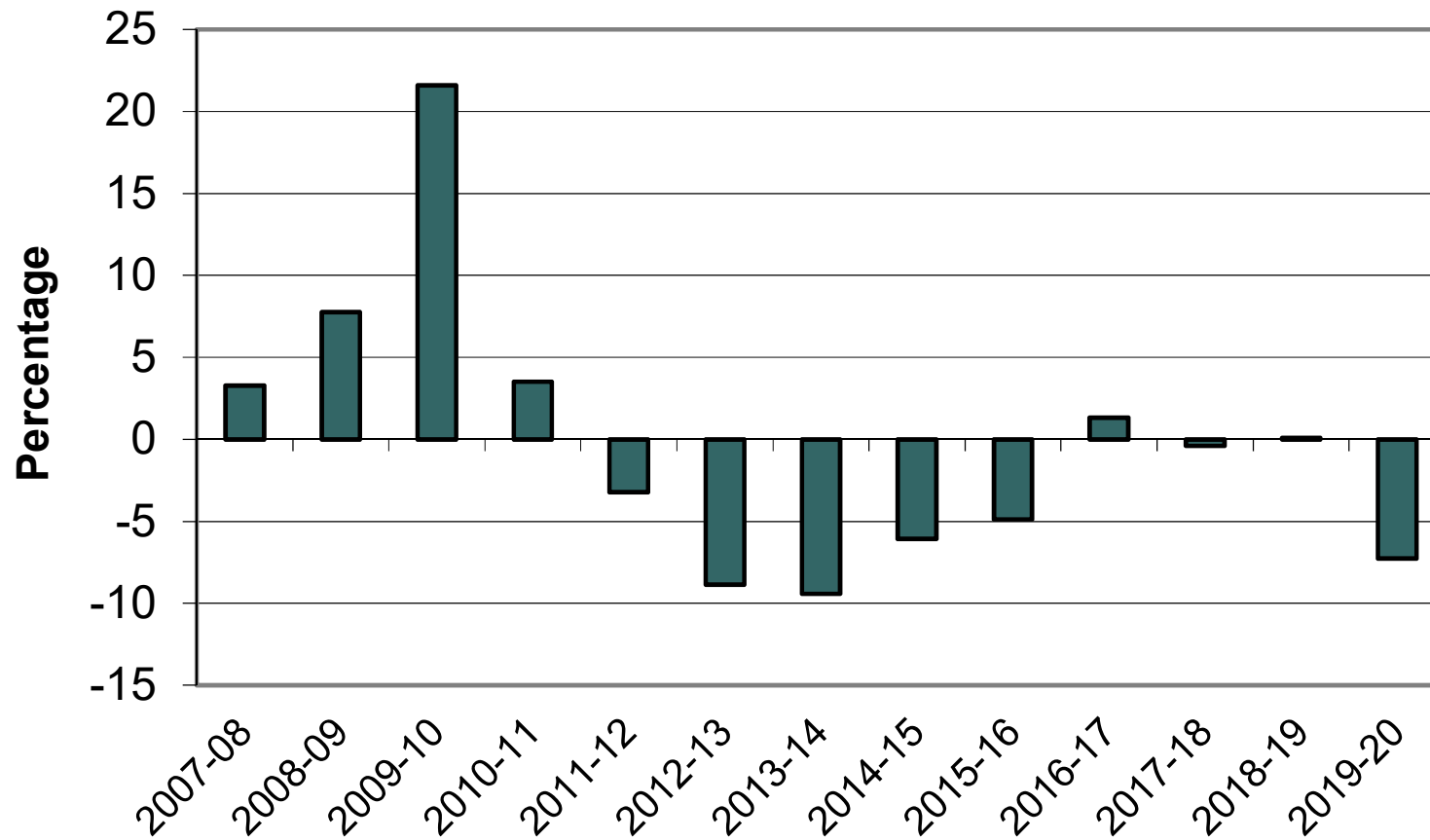


METROPOLITAN COMMUNITY COLLEGE FTE STUDENT ENROLLMENT GROWTH



2017-18 Full-Time Equivalent (FTE) Enrollments in Community College Courses by Category

Category of Courses	Central		Metro		Mid-Plains		Northeast		Southeast		Western		Total	
	FTE	% of Total	FTE	% of Total	FTE	% of Total	FTE	% of Total	FTE	% of Total	FTE	% of Total	FTE	% of Total
Academic Transfer % of Total Academic Transfer	796	22.0%	1,220	12.3%	762	52.8%	1,373	45.9%	1,543	22.0%	427	27.7%	6,121	23.1%
	13%		20%		12%		22%		25%		7%		100%	
Academic Support % of Total Academic Support	410	11.3%	3,548	35.8%	23	1.6%	213	7.1%	913	13.0%	179	11.6%	5,286	19.9%
	8%		67%		0%		4%		17%		3%		100%	
Undeclared/Non-Degree % of Total Undeclared/NonDeg	594	16.4%	360	3.6%	19	1.3%	14	0.5%	550	7.9%	65	4.2%	1,602	6.0%
	37%		22%		1%		1%		34%		4%		100%	
Foundations Education % of Total Foundatins Educ	125	3.4%	864	8.7%	69	4.8%	77	2.6%	278	4.0%	39	2.5%	1,452	5.5%
	9%		60%		5%		5%		19%		3%		100%	
Subtotal: Academic % of Total Academic	1,925	53.1%	5,992	60.4%	873	60.5%	1,677	56.0%	3,284	46.9%	710	46.1%	14,461	54.5%
	13%		41%		6%		12%		23%		5%		100%	
Applied Technology (Class 1) % of Total Appl Tech Class 1	837	23.1%	1,894	19.1%	331	22.9%	537	17.9%	1,563	22.3%	536	34.8%	5,698	21.5%
	15%		33%		6%		9%		27%		9%		100%	
Applied Technology (Class 2) % of Total Appl Tech Class 2	863	23.8%	2,038	20.5%	239	16.6%	780	26.1%	2,155	30.8%	293	19.0%	6,368	24.0%
	14%		32%		4%		12%		34%		5%		100%	
Subtotal: Technology % of Total Technology	1,700	46.9%	3,932	39.6%	570	39.5%	1,317	44.0%	3,718	53.1%	829	53.9%	12,066	45.5%
	14%		33%		5%		11%		31%		7%		100%	
GRAND TOTAL % of Total	3,625	100%	9,924	100%	1,443	100%	2,994	100%	7,002	100%	1,539	100%	26,527	100%
	14%		37%		5%		11%		26%		6%		100%	
Academic Support plus Class 1 & Class 2 Applied Technology Courses % of Total Academic Support plus Class 1 & Class 2 Applied Technology	2,110	58.2%	7,480	75.4%	593	41.1%	1,530	51.1%	4,631	66.1%	1,008	65.5%	17,352	65.4%
	12%		43%		3%		9%		27%		6%		100%	

Source: CCPE Report, Postsecondary Education Operating and State Aid Budget Recommendations 2019-21 Biennium

Note: Non-foundation academic courses are allocated by declared student major as of the tenth (10th) instructional day to academic transfer, academic support, and undeclared/non-degree.