



**METROPOLITAN**  
Community College

2112 N. 30th St. Omaha, NE 68111 www.mccneb.edu

Information: 531-622-2400  
MCC Police: 531-622-2222









# MCC North Express

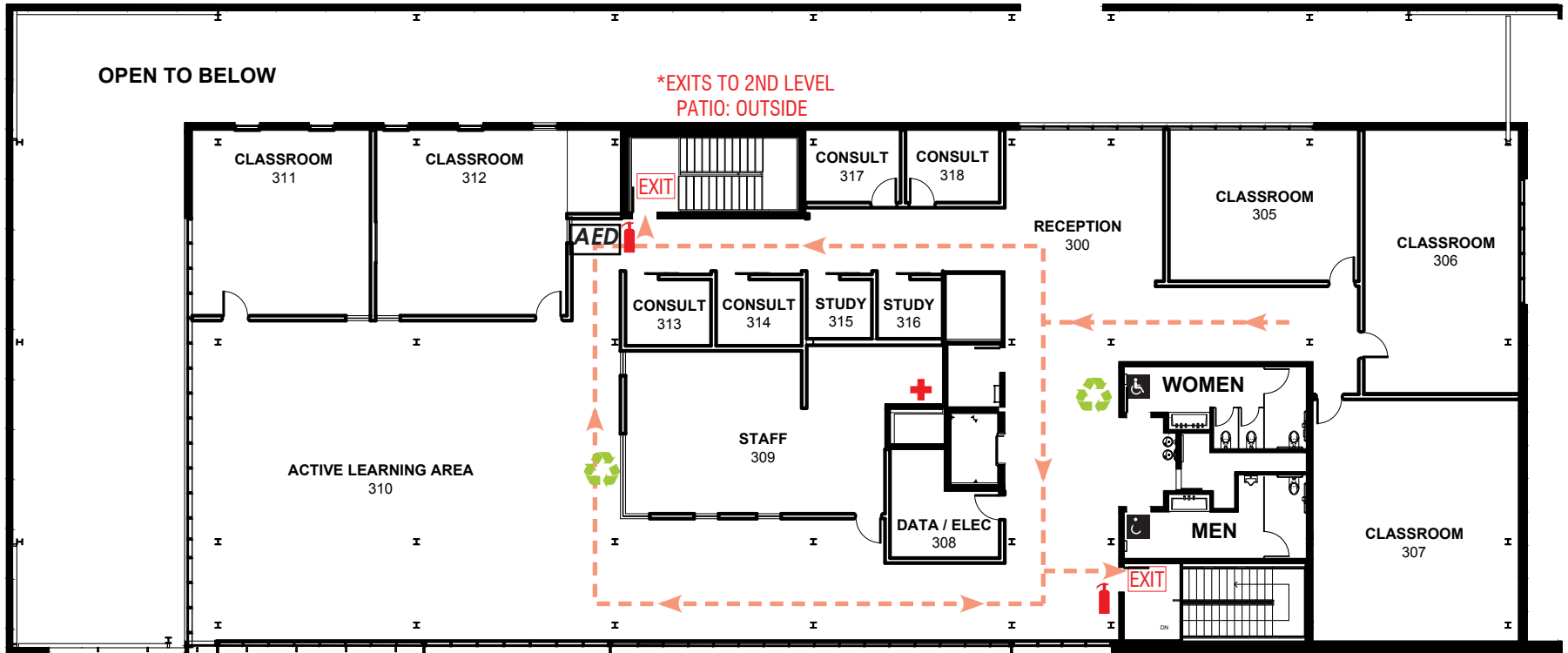
Third Floor



NORTH

## Legend

-  First Aid Cabinet
-  Automated External Defibrillator/Bleeding Control Kit
-  Evacuation Route
-  Severe Weather Area: Go to Bottom of East Stairs
-  Emergency Exit
-  Fire Extinguisher
-  ADA Accessible
-  Recyclable Bins



\*EXITS TO 2ND LEVEL  
PATIO: OUTSIDE

\*EXITS TO 2ND LEVEL  
\*TRAVEL TO BOTTOM OF  
THESE STAIRS FOR SEVERE  
WEATHER AREA