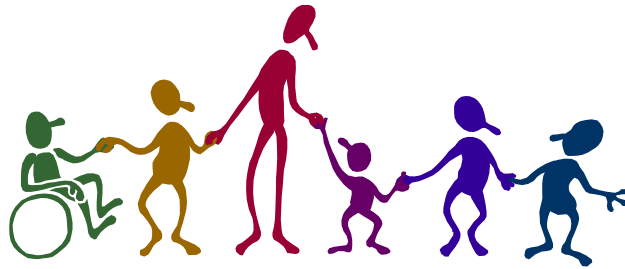


**METROPOLITAN**  
Community College

**EARLY CHILDHOOD EDUCATOR  
REGISTRATION WORKSHEET**



**2014-15 ACADEMIC YEAR**



*"Making College Count through Motivation, Collaboration, Connection"*

### *Social Services*

This schedule is a draft and is for planning purposes only.

Classes may be changed, added or deleted without notice.

Please check with an advisor or the MCC online website before registering.

**NONDISCRIMINATION AND EQUAL OPPORTUNITY STATEMENT:** Metropolitan Community College does not discriminate on the basis of race, color, national origin, religion, sex, marital status, age, disability or sexual orientation in admission or access to its programs and activities or in its treatment or hiring of employees.

**Early Childhood Educator (ECED)**

**FULL-TIME FACULTY**

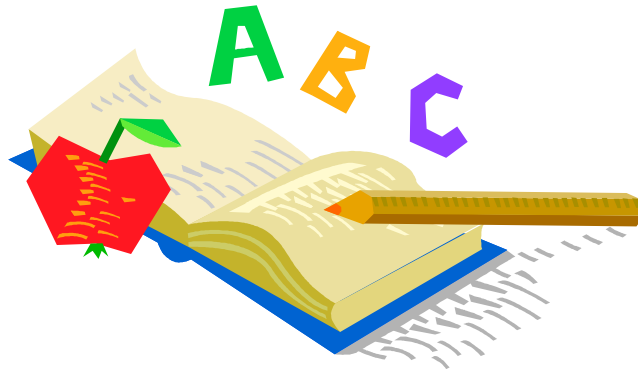
**Kathy Halverson-Rigatuso – 402-457-2282 – khalverson@mccneb.edu**

**Jayne Hines – 402-457-2890 – jhines10@mccneb.edu**

**Belle Scheef – 402-457-2698 – basheef1@mccneb.edu**

**ADVISING**

**Karen Rodgers – 457-2683 – krodgers@mccneb.edu**



**NOTES:**

---

---

---

---

---

---

---

---

This schedule is a draft and is for planning purposes only. Classes may be changed, added or deleted without notice. Please check with an advisor or the MCC online website before registering.



## ECED Tentative Schedule 2014-15 Academic Year

<b>FALL 2014 (14/FA)</b>	<b>Fort Omaha Campus</b>				
	ECED 1150 4A	Intro to Early Childhood	4.5	TTH	8:00a – 9:50a
	ECED 1220 4A	Prepracticum	1.5	F	9:00a – 11:45a
	ECED 1221 4A	Infant/Toddler Practicum	3.0	M-TH	TBA
	ECED 1240 4A	Preschool/School Age Practicum	3.0	M-TH	TBA
	ECED 2060 4A	ECED Curriculum Planning	4.5	TTH	12:00p – 1:50p
	ECED 2090 4A	Early Childhood Teach Practicum	6.0	M-TH	TBA
	<b>*LCNOC/24th &amp; Franklin</b>				
	ECED 1060 L1	Observ., Assessment & Guide	4.5	TTH	10:00a – 11:50a
	ECED 1110 L1	Infant & Toddler Develop	4.5	MW	10:00a – 11:50a
	ECED 1160 L1	Early Language and Liter	4.5	MW	8:00a – 9:50a
	ECED 2061 L1	Child Guidance Technique	4.5	TTH	8:00a – 9:50a
	<b>Online Internet Courses</b>				
	ECED 1050 WW	Expressive Arts	4.5	NET	NET
	ECED 1110 WW	Infant/Toddler Development	4.5	NET	NET
	ECED 1120 WW	Preschool Child Development	4.5	NET	NET
	ECED 1150 WW	Intro to Early Childhood	4.5	NET	NET
	ECED 1160 WW	Early Language and Literacy	4.5	NET	NET
	ECED 1230 WW	School-Age Child Development	3.0	NET	NET
	ECED 1260 WW	Children's Health & Nutrition	4.5	NET	NET
	ECED 2050 WW	Children with Exceptionalities	4.5	NET	NET
	ECED 2070 WW	Family & Comm Relations	4.5	NET	NET
	ECED 2095 WW	Current Topics in ECED	4.5	NET	NET
	ECED 2450 WW	Admin Early Childhood Ed	4.5	NET	NET
	<b>South Omaha Campus</b>				
	ECED 1060 8A	Observ., Assessment & Guide	4.5	T	6:00p – 9:40p
	ECED 1110 7A	Infant/Toddler Development	4.5	TTH	2:00p – 3:50p
	ECED 1110 8A	Infant/Toddler Development	4.5	M	6:00p – 9:40p
	ECED 1150 7A	Intro to Early Childhood	4.5	MW	2:00p – 3:50p
	ECED 1150 8A	Intro to Early Childhood	4.5	TH	6:00p – 9:40p
ECED 1160 8A	Early Language and Literacy	4.5	W	6:00p – 9:40p	
ECED 1220 8A	Prepracticum	1.5	W	6:00p – 9:30p	



**NOTES:**

---



---



---

This schedule is a draft and is for planning purposes only. Classes may be changed, added or deleted without notice. Please check with an advisor or the MCC online website before registering.

**ECED Tentative Schedule  
2014-15 Academic Year**



<b>WINTER 2014-15 (14/SP)</b>	<b>Fort Omaha Campus</b>				
	ECED 1220 4A	Prepracticum	1.5	F	9:00a – 11:45a
	ECED 1221 4A	Infant/Toddler Practicum	3.0	M-TH	TBA
	ECED 1240 4A	Preschool/School Age Practicum	3.0	M-TH	TBA
	ECED 1260 4A	Children’s Health & Nutrition	4.5	MW	8:00a – 9:50a
	ECED 2070 4A	Family & Comm. Relations	4.5	TTH	10:00a – 11:50a
	ECED 2090 4A	Early Childhood Teach Practicum	6.0	M-TH	TBA
	ECED 2450 4A	Admin Early Childhood Pr	4.5	TTH	12:00p – 1:50p
	<b>*LCNOC/24th &amp; Franklin</b>				
	ECED 1050 L1	Expressive Arts	4.5	MW	10:00a – 11:50a
	ECED 1120 L1	Preschool Child Development	4.5	TTH	10:00a – 11:50a
	<b>Online Internet Courses</b>				
	ECED 1050 WW	Expressive Arts	4.5	NET	NET
	ECED 1110 WW	Infant/Toddler Development	4.5	NET	NET
	ECED 1120 WW	Preschool Child Development	4.5	NET	NET
	ECED 1150 WW	Intro to Early Childhood	4.5	NET	NET
	ECED 1160 WW	Early Language and Literature	4.5	NET	NET
	ECED 1230 WW	School-Age Child Development	3.0	NET	NET
	ECED 1260 WW	Children’s Health & Nutrition	4.5	NET	NET
	ECED 2050 WW	Children with Exceptionalities	4.5	NET	NET
	ECED 2070 WW	Family & Comm Relations	4.5	NET	NET
	ECED 2095 WW	Current Topics in ECED	4.5	NET	NET
	ECED 2450 WW	Admin Early Childhood Ed	4.5	NET	NET
	<b>South Omaha Campus</b>				
	ECED 1050 7A	Expressive Arts	4.5	MW	2:00p – 3:50p
	ECED 1050 8A	Expressive Arts	4.5	M	6:00p – 9:40p
	ECED 1120 7A	Preschool Child Development	4.5	MW	2:00p – 3:50p
	ECED 1120 8A	Preschool Child Development	4.5	T	6:00p – 9:40p
ECED 1220 8A	Prepracticum	1.5	W	6:00p – 9:40p	
ECED 2095 4A	Current Topics in ECED	4.5	MW	12:00p – 1:50p	

**NOTES:**

---



---



---



---

This schedule is a draft and is for planning purposes only. Classes may be changed, added or deleted without notice. Please check with an advisor or the MCC online website before registering.



## ECED Tentative Schedule 2014-15 Academic Year

SPRING 2015 (14/SP)	<b>Fort Omaha Campus</b>				
	ECED 1150 4A	Intro to Early Childhood	4.5	MW	12:00p – 1:50p
	ECED 1221 4A	Infant/Toddler Practicum	3.0	M-TH	TBA
	ECED 1230 4A	School-Age Child Develop	3.0	TH	3:30p– 5:50p
	ECED 1240 4A	Preschool/School Age Practicum	3.0	M-TH	TBA
	ECED 2050 4A	Children with Exceptional	4.5	TTH	2:00p – 3:50p
	ECED 2060 4A	ECED Curriculum Plan - Hybrid	4.5	TH	12:00p – 1:50p
	ECED 2090 4A	Early Childhood Teach.	6.0	M-TH	TBA
	<b>*LCNOC/24th &amp; Franklin</b>				
	ECED 1060 L1	Observ., Assessment & Guide	4.5	TTH	10:00a – 11:50a
	ECED 1110 L1	Infant & Toddler Develop	4.5	MW	10:00a – 11:50a
	ECED 1160 L1	Early Language and Liter	4.5	MW	8:00a – 9:50a
	ECED 2061 L1	Child Guidance Technique	4.5	TTH	8:00a – 9:50a
	<b>Online Internet Courses</b>				
	ECED 1050 WW	Expressive Arts	4.5	NET	NET
	ECED 1110 WW	Infant & Toddler Develop	4.5	NET	NET
	ECED 1120 WW	Preschool Child Development	4.5	NET	NET
	ECED 1150 WW	Intro to Early Childhood	4.5	NET	NET
	ECED 1160 WW	Early Language & Literacy	4.5	NET	NET
	ECED 1230 WW	School-Age Child Development	3.0	NET	NET
	ECED 1260 WW	Children’s Health & Nutrition	4.5	NET	NET
	ECED 2050 WW	Children with Exceptionalities	4.5	NET	NET
	ECED 2070 WW	Family & Comm Relations	4.5	NET	NET
	ECED 2095 WW	Current Topics in ECED	4.5	NET	NET
	ECED 2450 WW	Admin Early Childhood Ed	4.5	NET	NET
	<b>South Omaha Campus</b>				
	ECED 1060 7A	Observ, Assessment & Guide	4.5	MW	2:00p – 3:50p
	ECED 1060 8A	Observ, Assessment & Guide	4.5	T	6:00p – 9:40p
	ECED 1110 8A	Infant/Toddler Development	4.5	M	6:00p – 9:40p
	ECED 1150 8A	Intro to Early Childhood	4.5	TH	6:00p – 9:40p
	ECED 1160 8A	Early Language and Literacy	4.5	W	6:00p – 9:40p
	ECED 1260 7A	Children’s Health & Nutrition	4.5	TTH	2:00p – 3:50p



**NOTES:** \_\_\_\_\_  
 \_\_\_\_\_  
 \_\_\_\_\_  
 \_\_\_\_\_

This schedule is a draft and is for planning purposes only. Classes may be changed, added or deleted without notice. Please check with an advisor or the MCC online website before registering.

**ECED Tentative Schedule  
2014-15 Academic Year**



<b>Summer 2015 (15/SS)</b>	<b>*LCNOC/24th &amp; Franklin</b>				
	1-ECED 1060 L1	Observ., Assessment & Guide	4.5	MTWTH	10:30a – 12:45p
	1-ECED 1120 L1	Preschool Child Development	4.5	MTWTH	8:00a – 10:15a
	<b>Online Internet Courses</b>				
	10-ECED 1050 WW	Expressive Arts	4.5	NET	NET
	10-ECED 1110 WW	Infant/Toddler Development	4.5	NET	NET
	10-ECED 1120 WW	Preschool Child Development	4.5	NET	NET
	10-ECED 1150 WW	Intro to Early Childhood	4.5	NET	NET
	10-ECED 1160 WW	Early Language & Literacy	4.5	NET	NET
	10-ECED 1230 WW	School-Age Child Develop	3.0	NET	NET
	10-ECED 1260 WW	Children's Health & Nutrition	4.5	NET	NET
	10-ECED 2050 WW	Children with Exceptionalities	4.5	NET	NET
	10-ECED 2070 WW	Family & Comm Relations	4.5	NET	NET
	10-ECED 2095 WW	Current Topics in ECED	4.5	NET	NET
	10-ECED 2450 WW	Admin Early Childhood Ed	4.5	NET	NET
	<b>South Omaha</b>				
10-ECED 1060 8A	Observ., Assessment & Guide	4.5	M	5:30p – 9:40p	
10-ECED 1220 8A	Prepracticum	1.5	W	5:30p – 9:00p	
10-ECED 2060 8A	ECED Curriculum Planning	4.5	T	5:30p – 9:40p	

**Notes:**

---



---



---



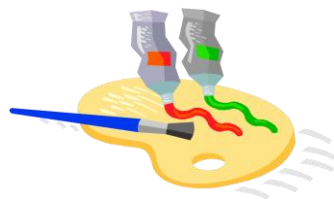
---



---



---



**\*LCNOC, Learning Community North Omaha Center**

This schedule is a draft and is for planning purposes only. Classes may be changed, added or deleted without notice. Please check with an advisor or the MCC online website before registering.

## REGISTRATION WORKSHEET

Fall 2014							
Prefix/Course #	Sec #	Course Title	Campus	Instructor	Time	Days	Credit Hrs.
Winter 2014/15							
Prefix/Course #	Sec #	Course Title	Campus	Instructor	Time	Days	Credit Hrs.
Spring 2014/15							
Prefix/Course #	Sec #	Course Title	Campus	Instructor	Time	Days	Credit Hrs.
Summer 2015							
Prefix/Course #	Sec #	Course Title	Campus	Instructor	Time	Days	Credit Hrs.

Student \_\_\_\_\_

Advisor \_\_\_\_\_

Phone \_\_\_\_\_

Date \_\_\_\_\_